

RD Web Access - Windows Internet Explorer

https://backup.keystonesmiles.org/RDWeb/Pages/en-US/default.aspx

File Edit View Favorites Tools Help

RD Web Access

This website wants to run the following add-on: 'Terminal Services ActiveX Client' from 'Microsoft Corporation'. If you trust the website and the add-on and want to allow it to run, click here...

Remote Desktop Services Default Connection

RemoteApp and Desktop Connection

RemoteApp Programs **Help** | **Sign out**

✘ ActiveX control not installed or not

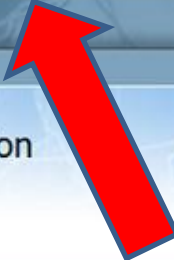
The Remote Desktop Services ActiveX Client control is not available. Before you can access remote programs and connect to remote desktops through RD Web Access, you must install and enable this ActiveX control.

If your computer does not have the correct version of the Remote Desktop Services ActiveX Client control, you must download and install an update package. To learn about this update and to download the installation package, visit [this website](#).

If you have already installed the correct update package, you must enable the ActiveX control. To do this, follow your browser's instructions to manage add-ons and to run ActiveX controls. When you enable the ActiveX control, you may see a security warning. Before you continue, make sure that the publisher for the ActiveX control is Microsoft Corporation.

After you install the package or enable the ActiveX control, you must refresh this Web page.

Done Internet 100% 12:22 PM



This website wants to run the following add-on: 'Terminal Services ActiveX Client' from 'Microsoft Corporation'. If you trust the website and the add-on and you want to run it, click 'Run Add-on on All Websites'.

- Run Add-on
- Run Add-on on All Websites
- What's the Risk?
- Information Bar Help



Remote Desktop Services Default Connection

RemoteApp and Desktop Connection

RemoteApp Programs

Help Sign out



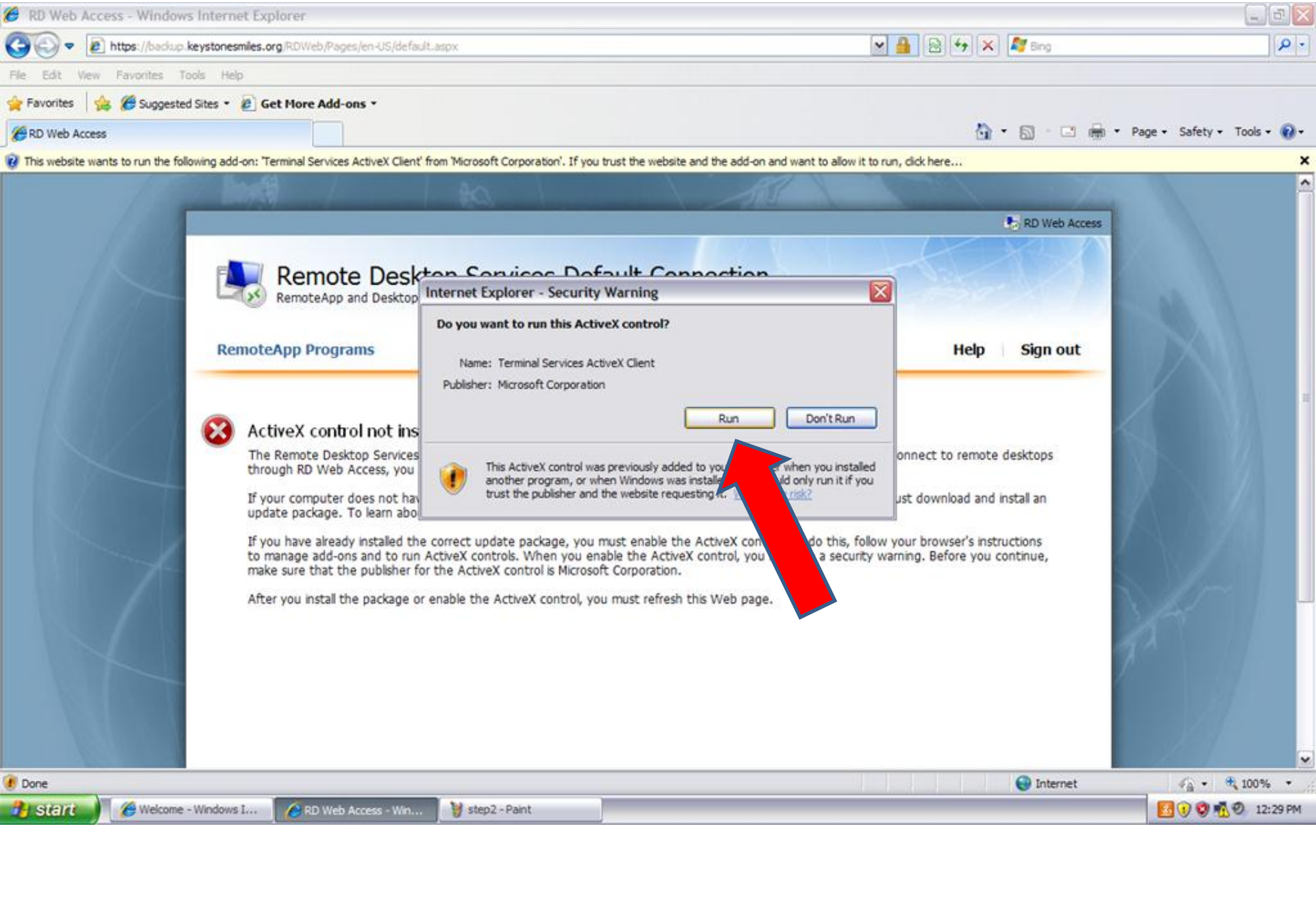
ActiveX control not installed or not

The Remote Desktop Services ActiveX Client control is not available. Before you can access remote programs and connect to remote desktops through RD Web Access, you must install and enable this ActiveX control.

If your computer does not have the correct version of the Remote Desktop Services ActiveX Client control, you must download and install an update package. To learn about this update and to download the installation package, visit [this website](#).

If you have already installed the correct update package, you must enable the ActiveX control. To do this, follow your browser's instructions to manage add-ons and to run ActiveX controls. When you enable the ActiveX control, you may see a security warning. Before you continue, make sure that the publisher for the ActiveX control is Microsoft Corporation.

After you install the package or enable the ActiveX control, you must refresh this Web page.



Remote Desktop Services Default Connection

RemoteApp and Desktop

RemoteApp Programs

ActiveX control not installed

The Remote Desktop Services... through RD Web Access, you...
If your computer does not have... update package. To learn about...
If you have already installed the correct update package, you must enable the ActiveX control... do this, follow your browser's instructions to manage add-ons and to run ActiveX controls. When you enable the ActiveX control, you... a security warning. Before you continue, make sure that the publisher for the ActiveX control is Microsoft Corporation.
After you install the package or enable the ActiveX control, you must refresh this Web page.

Internet Explorer - Security Warning

Do you want to run this ActiveX control?

Name: Terminal Services ActiveX Client
Publisher: Microsoft Corporation

Run **Don't Run**

This ActiveX control was previously added to your computer when you installed another program, or when Windows was installed. You should only run it if you trust the publisher and the website requesting it.

Help | **Sign out**